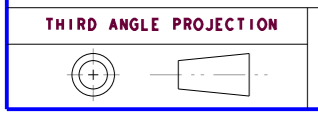


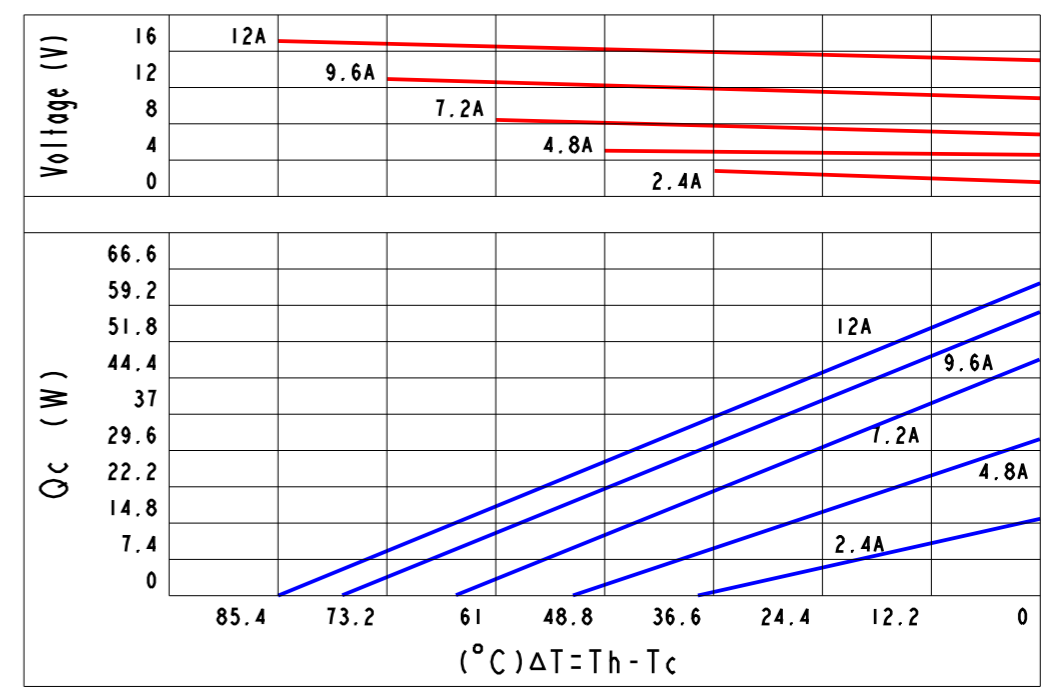
*DO NOT SCALE DRAWING



THIS DRAWING AND THE DATA DISCLOSED HEREIN OR HERewith IS NOT TO BE REPR ODUCEd USED OR DISCLOSED OR IN PART TO ANYONE WITHOUT THE PERMISSION OF KJLP (SHENZHEN) ELECTRONICS CO., LTD.

REVISIONS					
REV.	POS.	DESCRIPTION	DATE	DRW	APP
A		INITIAL CREATION	2013/09/09	Gory	Mason

Curve Chart(Be Confined To TEC2-196126262):



Part Number And Feature:

T	E	C	2	-	1	9	6	x	x	6	2	6	2	Sealing	YES
↓	↓		↓		↓	↓	↓	↓	↓	↓	↓	↓	↓	Operation Temperature	125°C(Max.)
Thermo	Electric	Chip	Stage	Stack	N & P	Stack	Quantity	Current	A(Max.)	Dimension	(A)	Dimension	(B)	Melting Point	138°C
														Storage Temperature	-60°C~100°C
														RoHS	YES

Technical Data:

ITEM	Part NO.	Stack(P&N)	A(Max.)	V(Max.)	Qc(W) /Th=27°C/ ΔT(°C)	DIM(A)	DIM(B)	DIM(H)
1	TEC2-196096262	196	9 A	16 V	56W	85°C	62	62
2	TEC2-196126262	196	12 A	16 V	66W	85°C	62	62

Notes:

1. Printing always on cold side.
2. Torlerance of thermo and electric parameters ±10%.
3. Please mount heat sink before you use it. also, please do not exceed the extra voltage at any time.
4. Please contact with us if you need Melting Point 183°C (Operation Temperature 150°C Max.).

<p>1. UNLESS OTHERWISE SPECIFIED, DIMENSIONS ARE MM</p> <p>2 TOLERANCE ARE AS FOLLOWS:</p> <p>0 < X < 2 ± 0.06</p> <p>2 < X < 10 ± 0.08</p> <p>10 < X < 50 ± 0.12</p> <p>50 < X < 100 ± 0.16</p> <p>100 < X < 200 ± 0.20</p> <p>200 < X < 300 ± 0.30</p> <p>ANGLES ± 0.5°</p>	<p>PART No. TEC2-196xx6262</p> <p>DESCRIPTION DC 16V(Max.),9~12A(Max.),196 P&N,62*62mm</p>	<p>昆晶冷片(深圳)电子有限公司</p> <p>KJLP (SHENZHEN)ELECTRONICS CO., LTD</p> <p>email: kjlp@kjlp.net http:// www.kjlp.net</p> <p>Tel: +86-755-82528352 Fax: +86-755-22639899</p>	
	<p>SIGNATURE</p> <p>DATE</p>		<p>CAD MODLE: TEC2-196xx6262.prt</p> <p>SCALE: 1:1</p> <p>REV: A</p>
	<p>DRAWN BY Gary 2013/09/09</p> <p>CHECKED BY Justin 2013/09/09</p> <p>ENGR Vivi 2013/09/09</p>		<p>CAD DWG: TEC2-196xx6262.drw</p> <p>SIZE: A3</p> <p>SHEET: 1 OF 1</p>
	<p>APPROVED BY Mason 2013/09/09</p> <p>ISSUED BY Jack 2013/09/09</p>		<p>MATERIAL:</p>