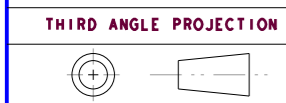


- Notes:
1. Printing always on cold side.
 2. Torlerance of thermo and electric parameters $\pm 10\%$.
 3. Please mount heat sink before you use it. also, please do not exceed the extra voltage at any time.
 4. Please contact with us if you need Melting Point 183°C (Operation Temperature 150°C Max.) and 235°C (Operation Temperature 200°C Max.) type.

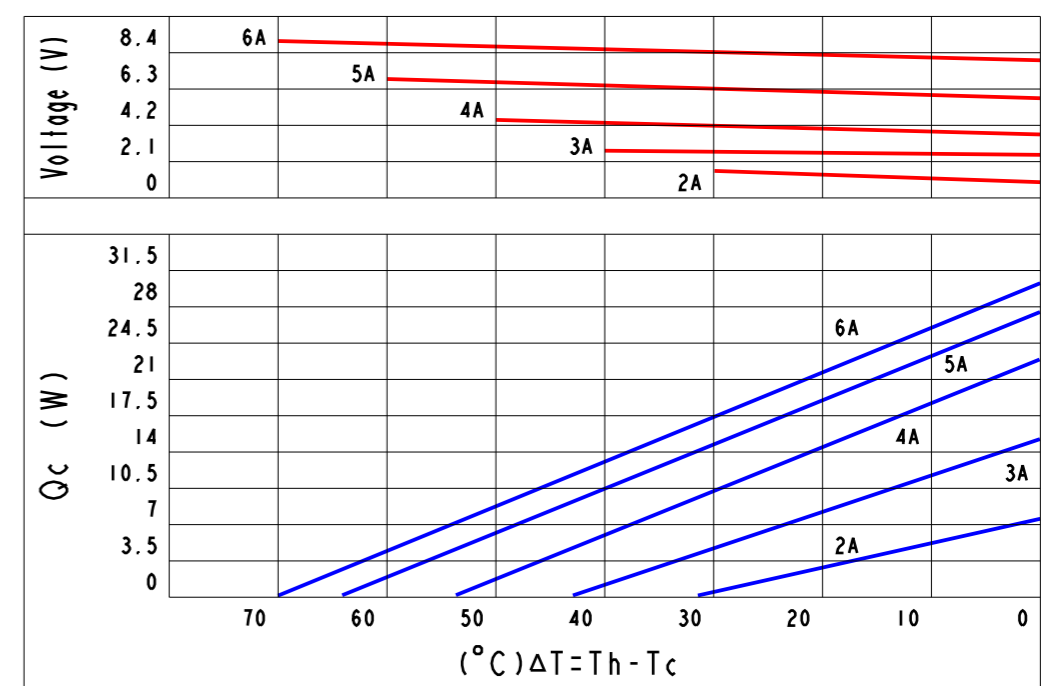
*DO NOT SCALE DRAWING



THIS DRAWING AND THE DATA DISCLOSED HEREIN OR HEREWITH IS NOT TO BE REPR ODUCE
USED OR DISCLOSED OR IN PART TO ANYONE WITHOUT THE PERMISSION OF KJLP (SHENZHEN) ELECTRONICS
CO., LTD.

REVISIONS					
REV.	POS.	DESCRIPTION	DATE	DRW	APP
A		INITIAL CREATION	2013/01/01	Gory	Meson

Curve Chart(Be Confined To TEC1-071062323):




Part Number And Feature:

T	E	C	I	-	0	7	1	x	x	2	3	2	3	Sealing	YES
↓	↓				↓	↓	↓	↓	↓	↓	↓	↓	↓	Operation Temperature	125°C (Max.)
Thermo	Electric	Chip	Stack		N & P	Stack	Quantity	Current	A (Max.)	Dimension	(A)	Dimension	(B)	Melting Point	138°C
														Storage Temperature	$-60^{\circ}\text{C} \sim 100^{\circ}\text{C}$
														RoHS	YES

Technical Data:

ITEM	Part NO.	Stack(P&N)	A(Max.)	V(Max.)	Qc(W) /Th=27°C/ ΔT(°C)	DIM(A)	DIM(B)	DIM(H)
1	TEC1-071012323	71	1.5 A	8.5 V	7.1W	70°C	23	23
2	TEC1-071022323	71	2 A	8.5 V	12W	70°C	23	23
3	TEC1-071032323	71	3 A	8.5 V	18W	70°C	23	23
4	TEC1-071042323	71	4 A	8.5 V	21W	70°C	23	23
5	TEC1-071052323	71	5 A	8.5 V	25W	70°C	23	23
6	TEC1-071062323	71	6 A	8.5 V	29W	70°C	23	23

1. UNLESS OTHERWISE SPECIFIED,
DIMENSIONS ARE MM
2 TOLERANCE ARE AS FOLLOWS:
0 < X < 2 ± 0.06
2 < X < 10 ± 0.08
10 < X < 50 ± 0.12
50 < X < 100 ± 0.16
100 < X < 200 ± 0.20
200 < X < 300 ± 0.30
ANGLES ± 0.5°

PART NO.	TEC1-071xx2323	DESCRIPTION	DC 8.5V(Max.), 1.5-6A(Max.), 71 P&N, 23*23mm		
SIGNATURE		DATE			
DRAWN BY	Gory	2013/01/01	 昆晶冷片(深圳)电子有限公司 KJLP (SHENZHEN) ELECTRONICS CO., LTD email: kjlp@kjlp.net http:// www.kjlp.net Tel: +86-755-82528352 Fax: +86-755-22639899		
CHECKED BY	Justin	2013/01/01			
ENGR	Vivi	2013/01/01			
APPROVED BY	Mason	2013/01/01			
MATERIAL:		ISSUED BY	Jack	2013/01/01	CAD MODLE: TEC1-071xx2323.prt CAD DWG: TEC1-071xx2323.drw
					SCALE: 1:1 REV: A SIZE: A3 SHEET: 1 OF 1