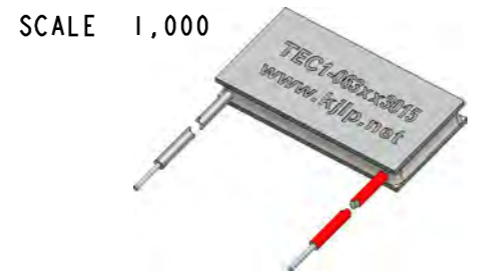
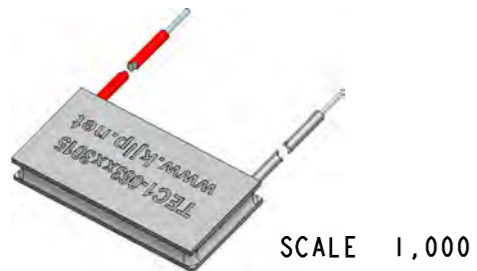
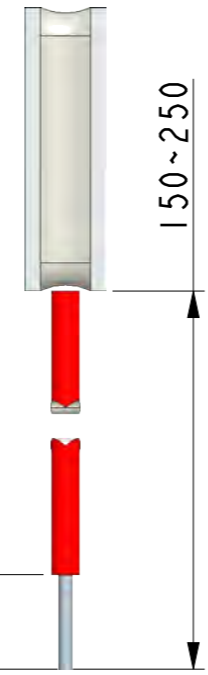
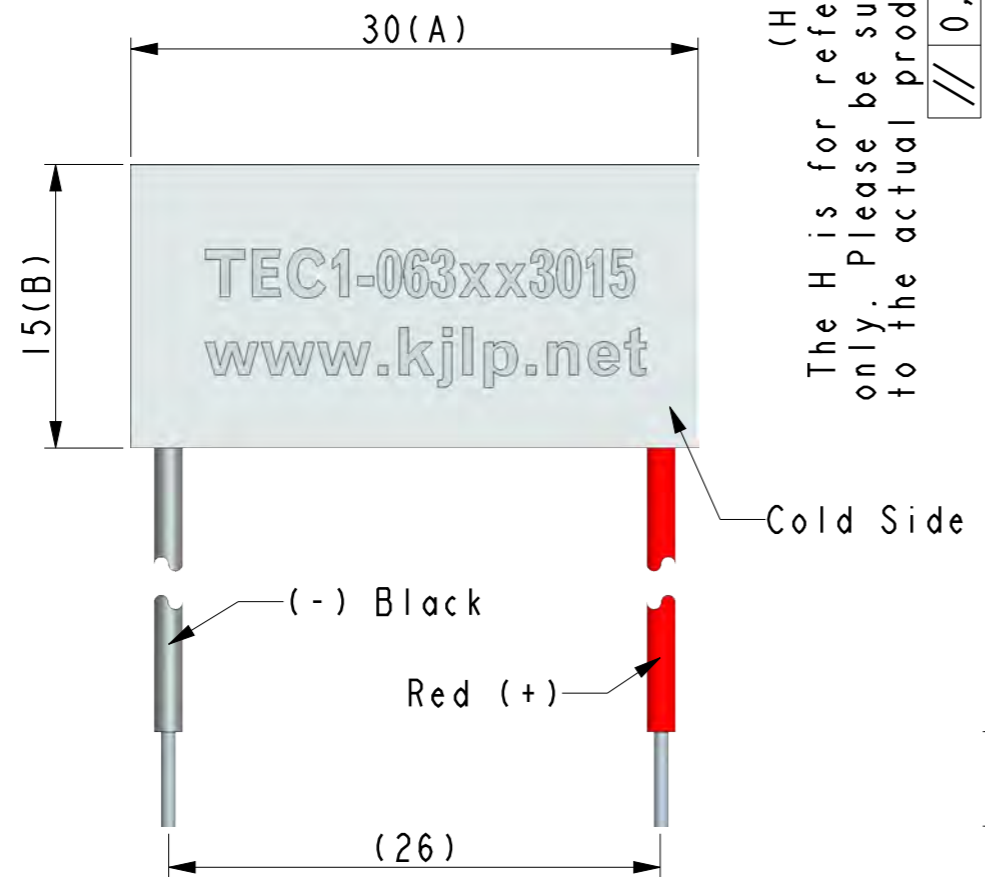
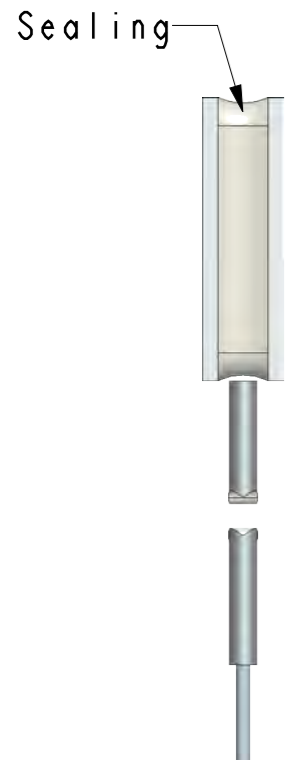


0,01

0,01

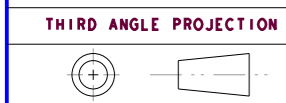
(H)±0.1
The H is for reference only. Please be subject to the actual products.

// 0,05 A



- Notes:
1. Printing always on cold side.
 2. Tolerance of thermo and electric parameters ±10%.
 3. Please mount heat sink before you use it. also, please do not exceed the extra voltage at any time.
 4. Please contact with us if you need Melting Point 183°C (Operation Temperature 150°C Max.) and 235°C (Operation Temperature 200°C Max.) type.

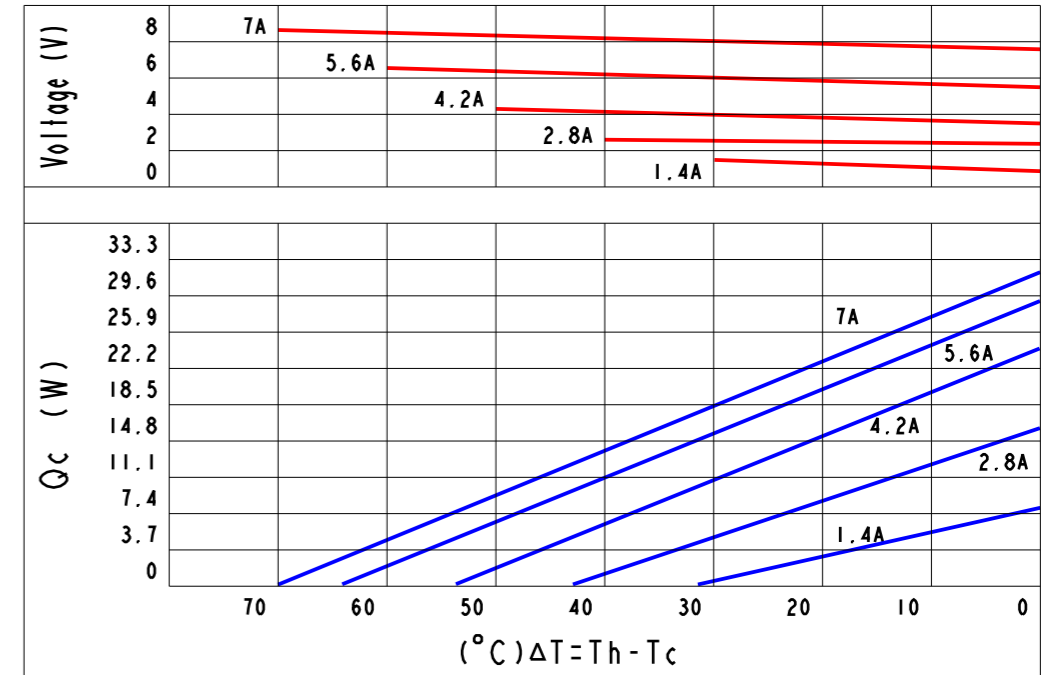
*DO NOT SCALE DRAWING



THIS DRAWING AND THE DATA DISCLOSED HEREIN OR HEREWITH IS NOT TO BE REPR ODUCE
USED OR DISCLOSED OR IN PART TO ANYONE WITHOUT THE PERMISSION OF KJLP (SHENZHEN) ELECTRONICS
CO., LTD.

REVISIONS					
REV.	POS.	DESCRIPTION	DATE	DRW	APP
A		INITIAL CREATION	2013/01/01	Gory	Mason

Curve Chart(Be Confined To TEC1-063073015):




Part Number And Feature:

T	E	C	I	-	0	6	3	x	x	3	0	1	5	Sealing	YES
↓	↓				↓	↓	↓	↓	↓					Operation Temperature	125°C(Max.)
Thermo	Electric	Chip	Stage	N & P	Stack	Quantity	Current	A(Max.)	Dimension	(A)	Dimension	(B)	Melting Point	138°C	
													Storage Temperature	-60°C~100°C	
													RoHS	YES	

Technical Data:

ITEM	Part NO.	Stack(P&N)	A(Max.)	V(Max.)	Qc(W) /Th=27°C/ ΔT(°C)	DIM(A)	DIM(B)	DIM(H)
1	TEC1-063013015	63	1 A	7.5 V	5.6W	70°C	30	15
2	TEC1-063023015	63	2 A	7.5 V	10W	70°C	30	15
3	TEC1-063033015	63	3 A	7.5 V	14W	70°C	30	15
4	TEC1-063043015	63	4 A	7.5 V	19W	70°C	30	15
5	TEC1-063053015	63	5 A	7.5 V	24W	70°C	30	15
6	TEC1-063063015	63	6 A	7.5 V	28W	70°C	30	15
7	TEC1-063073015	63	7 A	7.5 V	33W	70°C	30	15

1. UNLESS OTHERWISE SPECIFIED, DIMENSIONS ARE MM
2 TOLERANCE ARE AS FOLLOWS:
0 < X < 2 ± 0.06
2 < X < 10 ± 0.08
10 < X < 50 ± 0.12
50 < X < 100 ± 0.16
100 < X < 200 ± 0.20
200 < X < 300 ± 0.30
ANGLES ± 0.5°

PART NO.	TEC1-063xx3015	DESCRIPTION	DC 7.5V(Max.), 1~7A(Max.), 63 P&N, 30*15mm			
SIGNATURE		DATE	 昆晶冷片(深圳)电子有限公司 KJLP (SHENZHEN) ELECTRONICS CO., LTD email: kjlp@kjlp.net http:// www.kjlp.net Tel: +86-755-82528352 Fax: +86-755-22639899			
DRAWN BY	Gory	2013/01/01				
CHECKED BY	Justin	2013/01/01				
ENGR	Vivi	2013/01/01				
APPROVED BY	Mason	2013/01/01				
ISSUED BY	Jack	2013/01/01	CAD MODLE:	TEC1-063xx3015.prt	SCALE: 1:1	REV: A
MATERIAL:			CAD DWG:	TEC1-063xx3015.drw	SIZE: A3	SHEET: 1 OF 1